

## Covid® Holographic Security Laminates

ITW Security Division's Covid® Holographic Laminate Patch provides excellent adhesion and durability to protect personalized data against daily wear and tear. Custom holograms help prevent counterfeiting and aid in the authentication of genuine documents. This laminate is designed to work with a wide variety of plastic ID card substrates, including PVC, composite PVC, PET, PC and card stocks that are personalized with dye diffusion thermal transfer (D2T2) and resin retransfer printing technologies.



### Custom Size

Covid Holographic Laminate Patches are designed and manufactured to the specific size and registration requirements of each application. Non-standard and partial card-size laminates are available upon request.

### Card Substrates

ITW Security Division laminates are compatible with a variety of ID card substrates, including PVC, composite PVC, PET, PC and card stocks personalized with D2T2 and resin retransfer printing.

### Chip Cutout

Optional chip cutouts are available to prevent interference with contact and contactless chips.

### Custom Holographic Design

ITW Security Division's art department works with each client to create custom holographic origination designs that integrate with the background artwork and personalized data to deliver cohesive designs that are attractive, original, easy to authenticate, and highly secure.

### Printer Specific Construction

Covid Holographic Laminate Patches are customized to the specific requirements of each ID card printer/laminator model. Contact the equipment manufacturer to source the ITW Security Division laminate designed to work in your printer/laminator.

## Advantages

- ✓ Cannot be reproduced using a printer or photocopier
- ✓ Excellent durability for long-life cards
- ✓ Fully customized laminate solutions
- ✓ Can be combined with ITW Security Division Imagedata D2T2 ribbons for a complete personalization and security solution

## Applications

- Driving Licenses
- ID Cards
- Healthcare, Voting, and Social Welfare Cards

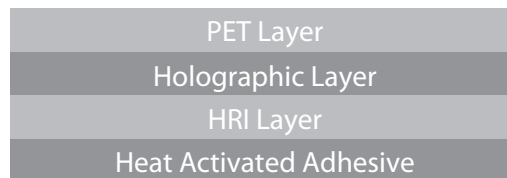
# Holographic Laminate Patch

## General Information

<b>Color</b>	HRI
<b>Film</b>	15 or 25 micron PET
<b>Splices</b>	Not Permitted
<b>Labeling</b>	Rolls are identified as per customer requests.
<b>Packaging</b>	Rolls are individually wrapped to avoid contamination and are secured in close fitting cardboard boxes to avoid damage.
<b>Storage</b>	Product should be transported and stored in dry conditions away from direct heat and sunlight. Optimal storage temperature is 20°C (68°F) at 50% relative humidity. The recommended shelf life is 12 months.
<b>Ordering</b>	Minimum order quantities apply.

## Properties

- ✓ Extreme durability and protection from water and humidity
- ✓ High heat resistant polymeric coatings
- ✓ Excellent adhesion to card surfaces
- ✓ UV light protection is available



## Technical Characteristics - Card Durability

Properties	Requirement*	Result
ID-1 Card Flexure	100,000 Cycles	Pass
ID-1 Plasticizer Exposure	0.5" Fracture	Pass
Temperature and Humidity Induced Dye Migration	0% Dye Migration	Pass
Card Structure Integrity Test	<100% Removal	Pass
Surface Abrasion, Tabor, CS10 500gm		
	15 micron:	≥ 2,000 Cycles
	25 micron:	≥ 5,000 Cycles

\* As per ANSI INCITS 322-2002

SAMPLES: ITW Security Division works with most original equipment manufacturers (OEMs) and understands the product requirements necessary to match each machine. With this in mind, sample product is usually available through the OEMs for product testing.

NOTE: Although the information provided herein is given in good faith and deemed reliable, it is not intended as a warranty. We recommend that customers trial the product in order to determine suitability in the intended application. Please contact your OEM to receive material for trial purposes. ITW Security Division reserves the right to change specifications without notice.